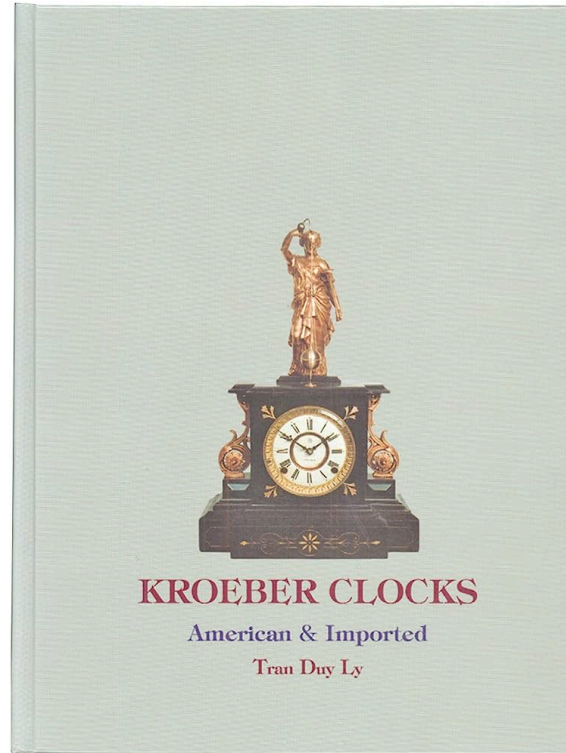


Heirloom Clocks: Kroeber Clocks

This document features 40 Kroeber Clocks arranged in alphabetical order by model name, except one unidentified on the next page and two that are unidentified at the end. The descriptions in the copy often refer to the following book which is a comprehensive guide to clocks made by F. Kroeber.

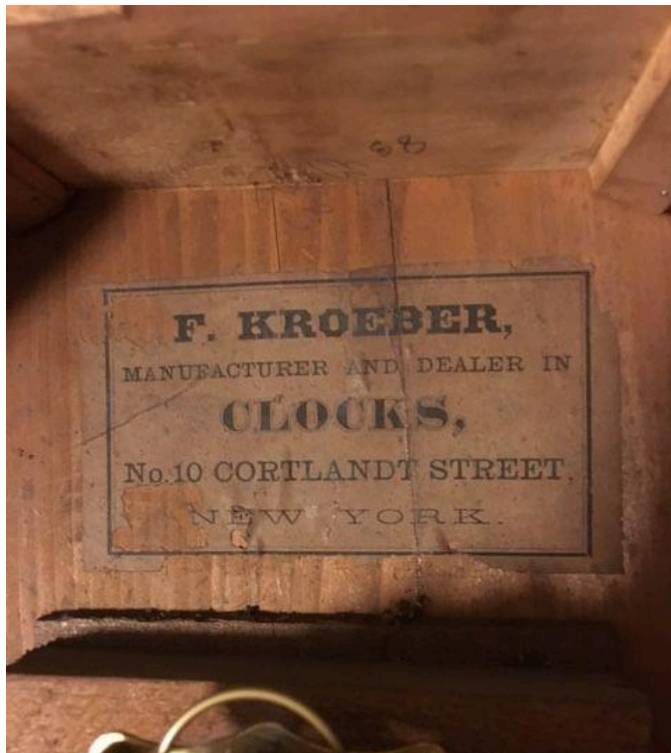


To order any item follow the link below to an online order form. You will be contacted by email or phone within 24 hours after your order is received. Items are one-of-a-kind and you will be notified if the item you are interested in is still available.

[Heirloom Clocks Estate order form](#)

Unidentified EXTREMELY RARE

This clock has a Laporte Hubble tandem wind movement, walnut case, and porcelain chapters. This is the only one of its kind Carl had ever seen. Even Kent Kroeber, the maker's descendent who has the largest collection of Kroeber clocks known, does not have one and has never seen this model. From photos sent to him he verified that it is original. This model does not appear in any Kroeber clock reference books. ***This was one of Carl's favorite clocks.*** Carl's consignment price is **\$10,000**. Order #KR-B01-HS



Antoinette

c.1898, height 8 ¼", enameled iron, black. This clock is #7 on page 49 in *Kroeber Clocks* by Tran Duy Ly. Shelf A4. For **parts or repair** Carl's price is **\$250.00**. Order **#KR-B02-HR**



SOLD

Arch Top

c.1866, Polished Walnut Case, Eight Day Strike Movement, 13 ½" high. This clock is pictured on page 268, #865 in *Kroeber Clocks* by Tran Duy Ly. Box 22A. Carl's Price for **consignment** **\$350.00**. Order **#KR-B03-HS**



Cabinet #2

c.1881, Eight Day Time and Strike, 5" Dial-Glass Covered, Ebony Case with Bronze Feet, 12" high. Five inch white dial. This clock is #307 on page 131 in *Kroeber Clocks* by Tran Duy Ly. Box 6B. Carl's **consignment** price is **\$300.00**. Order **#KR-B04-HS**



SOLD

Checkmate

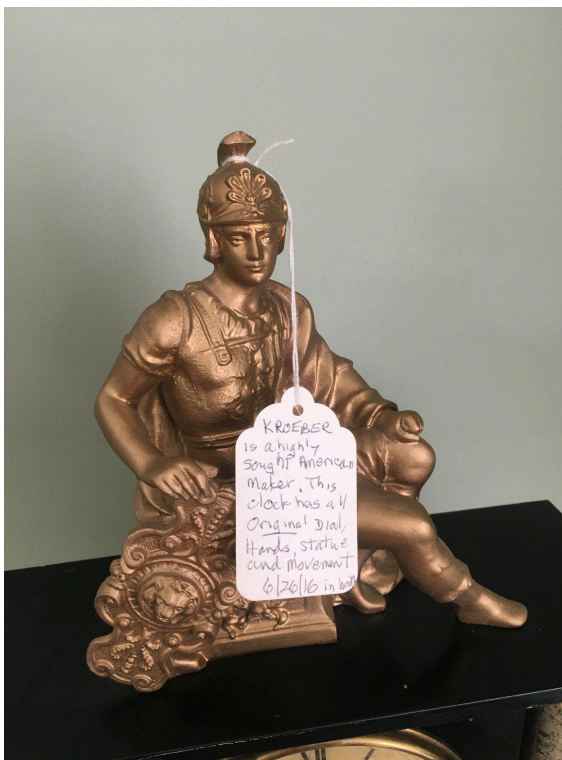
c.1888, 1 Day Lever Movement, 6 ½" high, gilt front on nickel, Beveled Glass Sides. This clock is #145 on page 84 in *Kroeber Clocks* by Tran Duy Ly. Box 20. Carl's Price for **consignment \$250.00**. Order **#KR-B05-HS**



SOLD

Cimbria with Figure

c.1888, 18" high, Enamelled Iron Case with 5" Porcelain Dial, 8 Day Time/Strike Movement on Gong. Five inch porcelain dial. This clock is #458 on page 168 in *Kroeber Clocks* by Tran Duy Ly. Box 20. For **consignment \$400.00**. Order #KR-B06-HS



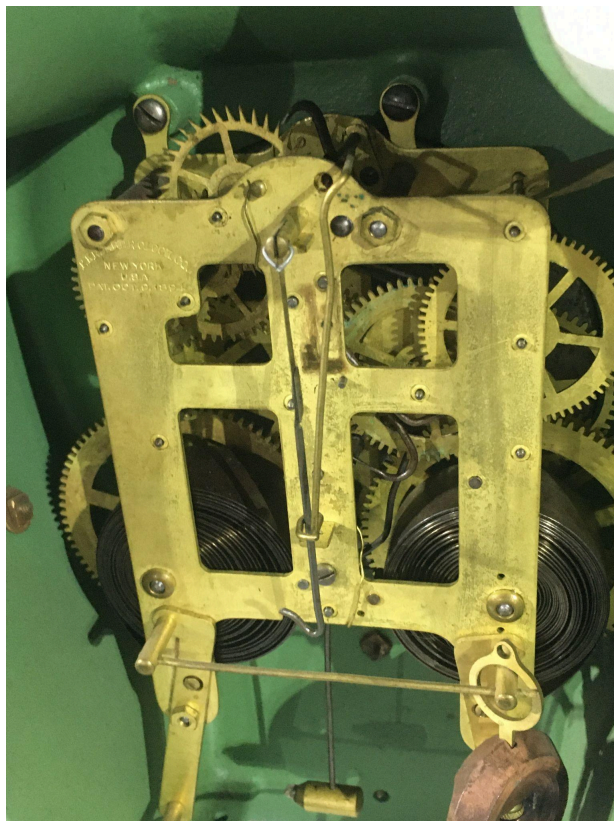
Conde

c.1895, Enameled Iron with Patented Kroeber Eclipse 8 Day Time/Strike Movement, 14 $\frac{3}{4}$ " high x 14" wide. (Pendulum permanently Attached). The top piece is different from the clock pictured in *Kroeber Clocks* by Tran Duy Ly on page 171, #467. Box 7. Serviced 10/15/2020. Carl's price for **consignment \$350.00**. Order **#KR-B07-HS**



Conde

Green cast iron, 8-day gong strike with Eclipse movement, 14 $\frac{3}{4}$ " high, 14" wide, Similar to one in *Kroeber Clocks* by Tran Duy Ly, page 171 #467, but the dial is different, and the back plate is detached. Shelf B3. For parts or repair Carl's price is **\$250.00**. Order **#KR-B08-HR**



SOLD

Cottage Clock

c.1880s, Rosewood Case, 8 Day Time/Strike Movement, Dial repainted. Fully Functioning as of 9/20/2020.
Box 3. Carl's price for **consignment** is **\$200.00**. Order **#KR-B09-HS**



Diamond

c. 1875 Oil Walnut Case, 8-day Time and Strike Movement with Original Pierced Moon Hands, 14 ½" high.
Similar to page 288, #946 in *Kroeber Clocks* by Tran Duy Ly, except the dial is different. Carl's clock has the American dial, #1850 on page 508. Box 22A. For **consignment** Carl's price is **\$400.00**. Order **#KR-B10-HS**



Headlight

c.1888, has a Walnut Case with Mirrors on the Sides, a 6" fancy dial, with an 8-day Time and Strike Movement with Kroeber Patented Glass Pendulum. Compare to #995 on page 300 in *Kroeber Clocks* by Tran Duy Ly, but the gilding on the glass is different. 23" high. Box 3. Carl's **consignment** price is **\$500.00**. Order **#KR-B11-HS**



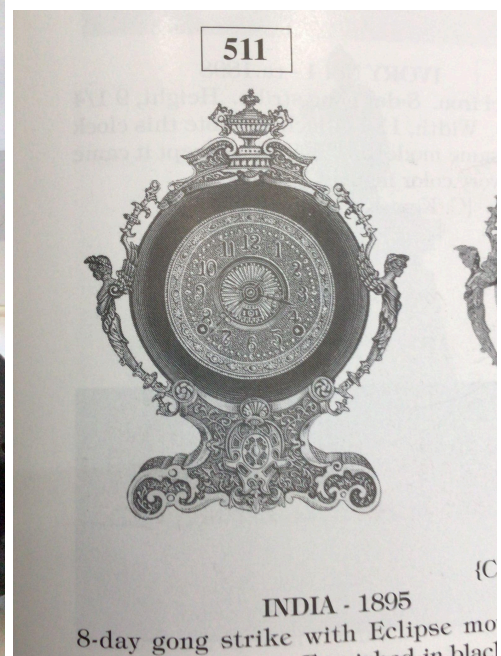
Iowa

c.1900, Wood Case with Decorative Metal Front Frame, 8-Day Eclipse Time and Strike on Cathedral Gong Movement. 13" Tall x 10" Wide x 4 1/4" Depth. Note the crack in wood on the left side front. The back panel slides up and out to access movement. Clock serviced on 8/28/2019. This clock is #1009, on page 304 in *Kroeber Clocks* by Tran Duy Ly. Box 22A. Carl's Price for **consignment \$400.00**. Order **#KR-B12-HS**



India (Disassembled)

c.1895. These are pieces of India, which was an 8-day gong strike with the Ellipse movement. It would be 14" high. The clock is #511 on page 181 in *Kroeber Clocks* by Tran Duy Ly. Box 74. Pieces in a box for **parts or restoration**, Carl's price is **\$200.00**. Order **#KR-B13-HW**



Italia with Figure

c.1889, enameled iron, gray marbleized, 8-day strike. Height 17", width 12 ¾". The dial is different, but this clock is shown as #514, page 182 in *Kroeber Clocks* by Tran Duy Ly. Shelf A2. For **parts or repair** Carl's price is **\$500**. Order **#KR-B14-HR**



Louis XIV

c.1895, Enameled Iron Case 16" tall x 8 ½" wide, 8-Day Time/Strike Eclipse Movement. In *Kroeber Clocks* by Tran Duy Ly it is #531 on page 186. Box 83. Carl's Price for **consignment \$400.00**. Order **#KR-B15-HS**



SOLD

Massachusetts

c.1900 has a Wood Case with a Metal Frame/Gilt Trim It is 12 ½" high, with an 8-Day Eclipse Time and Strike Movement. IT IS RARE. The back panel of this clock case slides up and out to access the movement. It is listed as #1048, on page 313 in *Kroeber Clocks* by Tran Duy Ly. Box 22A. Carl's Price for **consignment** **\$400.00**. Order #KR-B16-HS



Monogram (or Monogram No. 2)

c.1875 has a walnut case with the top finial and side rail missing. The door is detached. There is no glass. This clock is listed as a 8-day strike #1055 or 1056 on page 315 of *Kroeber Clocks* by Tran Duy Ly. The illustration shows the same 6" dial, hands and pendulum. E1. For **parts or repair** Carl's price is **\$200.00**. Order #KR-B17-HW



Nursery Clock

Red Plush Velvet Case with a Porcelain/ bisque Doll and three beveled glass mirrors. Eight Day Time and Strike movement. RARE! Box 20. Carl's **consignment** price is **\$400.00**. Order **#KR-B18-HS**



Parisian No. 2

c.1878 Walnut Case 25" Tall, 6" Dial, 8-day Time and Strike Movement, Kroeber Patented Glass Pendulum.
Kroeber Clocks by Tran Duy Ly shows this clock on page 328, as #1106. Carl's Price for **consignment**
\$500.00. Order #KR-B19-HS



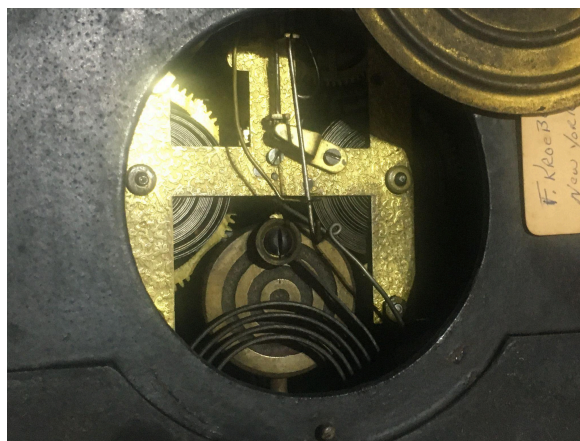
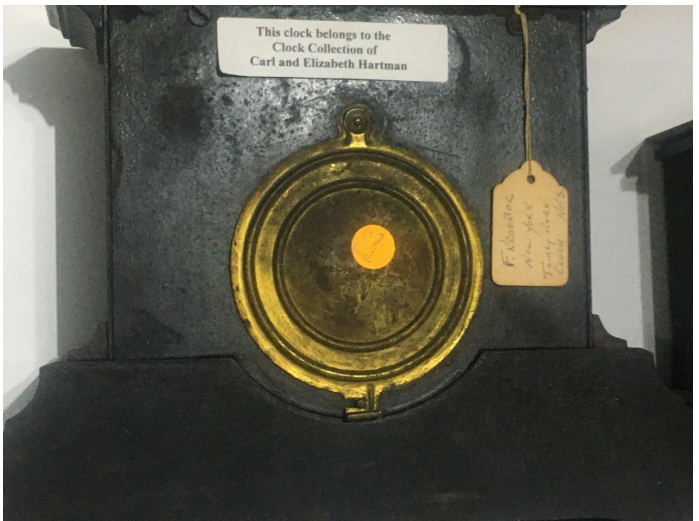
Pavonia

Mantle clock, enameled iron, 10" high, 5" dial, (number 572, page 196 in *Kroeber Clocks* by Tran Duy Ly), Roman numerals, Kroeber movement 3 ½ stamped on it, and patent number and date, October, 1874. The gold paint on the trim, which is on this clock, is not authentic. Carl marked it fully functional on 9/28/20. Box 16. Carl's **consignment** price is **\$350.00**. Order **#KR-B20-HS**



Another Pavonia

c.1888, enameled iron, 8-day gong strike. Height 10", no glass. Shelf B1. Carl's price for **repair or restoration** **\$250.00**. Order **#KR-B21-HR**



SOLD

Plush Plaque No. 1

c.1884. This plaque, with an alarm, is 10½" diameter. It is pictured as #73 on page 65 of *Kroeber Clocks* by Tran Duy Ly, and is described as originally having a silk plush in red, blue, and olive, but this one has a wooden border. There is an almost identical plaque by New Haven called, "Zephyr" c.1885. The New Haven plaque also originally had a plush border, but that clock was only 10" high. The New Haven clock is pictured on page 462 as #1971 in *New Haven Clocks and Watches* by Tran Duy Ly. Box 47. Carl's **consignment** price is **\$200.00**. Order #KR-B22-HS



Plaque No. 2

c.1888 Brass, 8-day lever movement. Fancy Dial with Porcelain Chapters, 12" Diameter. Page 93, #183 in *Kroeber Clocks* by Tran Duy Ly. Box 22B. Carl's Price for **consignment \$250.00**. Order #KR-B23-HS



Another Plaque No. 2, this one with Alarm

Brass Alarm @1888 Deep Image 12" Diameter Cast Brass Case that has 5.5" Plush Dial and Porcelain Chapters. Page 51, #14 in *Kroeber Clocks* by Tran Duy Ly. Box 22B. Carl's price for **consignment** is **\$250.00**. Order #KR-B24-HS



Plaque No. 3

c.1888. Hanging Brass, 8-day lever movement. Plush dial, porcelain figures. Diameter, 12". Found on page 93, as #184 in *Kroeber Clocks* by Tran Duy Ly. Box 22B. For **consignment** Carl's price is **\$200.00**. Order **#KR-B25-HS**



Another Plaque No. 3

Hanging Brass c.1888, 8-day lever movement. Diameter 12". Pictured on page 93, as #184 in *Kroeber Clocks* by Tran Duy Ly. Box 22B. Carl's price for **consignment** is **\$200.00**. Order **#KR-B26-HS**



Plaque No. 4

Hanging Brass Plaque c.1888, Deep Image 12" Diameter Cast Brass Case with Colored Cut Glass Jewels. Plush Dial 5 1/2" with Porcelain Chapters. Shown on page 93 as #185 in *Kroeber Clocks* by Tran Duy Ly. Box 22B. Carl's price for **consignment** is **\$200.00**. Order **#KR-B27-HS**



Plaque No. 4 with Alarm

c.1888, Deep Image 12" Diameter Cast Brass Case with blue cut glass jewels. Plush Dial is 5 1/2" with Porcelain Chapters. Page 53, #22 in *Kroeber Clocks* by Tran Duy Ly. Box 22B. Carl's **consignment** price is **\$250.00**. Order **#KR-B28-HS**



Regulator No. 31

c.1875, Walnut case, 34"high, 6" dial with brass center. Eight Day Time and Strike Movement, Faux Mercury Pendulum. This clock is #231, on page 107 in *Kroeber Clocks* by Tran Duy Ly. Carl's **consignment** price is **\$1000.00**. Order #KR-B29-HS



SOLD

Regulator No. 33

c.1880 46" tall, walnut case with 10" dial, etched glass, eight day time and strike movement, patented Kroeber Beveled Glass Bob. It is 46" high. It is listed as #246 on page 110 in *Kroeber Clocks* by Tran Duy Ly. Carl's consignment price is \$5,000. ***This was one of Carl's favorite clocks.*** Order #KR-B30-HS



Regulator No. 38

c.1880 has a Walnut Case which is missing the bottom ornament. This clock is pictured as #255, page 112 in *Kroeber Clocks* by Tran Duy Ly. This clock has a Porcelain dial, etched glass with **EK** logo, 8-day Time/Strike on Bell Movement, 5" dial, and Patented Kroeber Beveled Glass Pendulum. It was used as a hanging or mantel clock. **It is VERY RARE!!** Box 20. Carl's **consignment** Carl's price is **\$800.00**. Order **#KR-B31-HS**



Relief

c.1880, 15" Tall, 4" Dial, 30 Hour Time Only Movement, with Faux Mercury One Barrel Pendulum. SCARCE. Box 20. Carl's Price for **consignment \$300.00**. Order **#KR-B32-HS**



SOLD

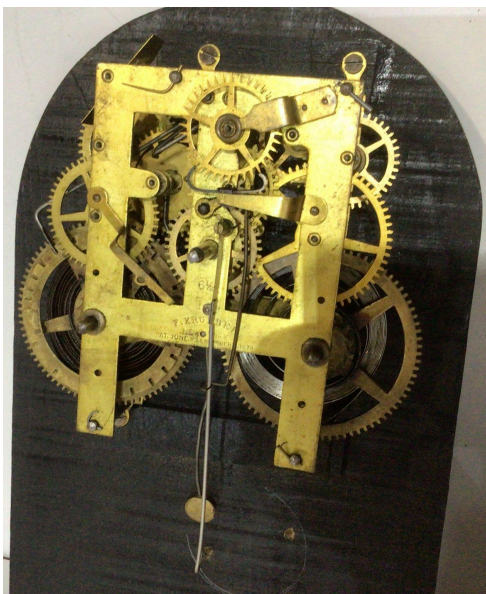
Round Top Extra

c.1866, 8-day strike, movement by Noah Pomeroy, oil walnut case, 14", patent date is carved in the front of the case. This clock is pictured on page 334, as #1131 in *Kroeber Clocks* by Tran Duy Ly. Box 6A. Carl's consignment price is **\$350.00**. Order #KR-B33-HS



Round Top

Wooden case mantel clock in need of restoration. The metal lion has an open mouth. The hands and pendulums were inside. The case measures 13 1/2" high, 9" wide, and 4" deep. This clock seems to be #1138 or #1140 on page 336 in *Kroeber Clocks* by Tran Duy Ly. Shelf C1. For **parts or repair**, Carl's price is **\$100.00**. Order #KR-B34-HR



Talisman

c.1885, 8-day strike gong, visible pendulum, 6" dial, height 21 ½". This clock is shown on page 342 as #1161 in *Kroeber Clocks* by Tran Duy Ly, but the glass front is a different picture and the pendulum is different. Box 3. Carl's price for **consignment \$350.00**. Order **#KR-B35-HS**



SOLD

Thistle

c.1881, Victorian 1-day lever, Alarm and Calendar. Dial with F Kroeber logo. Nickel Case. Height 8 ¼". This clock is #139 in *Kroeber Clocks* by Tran Duy Ly on page 82. Box 20. Carl's **consignment price is \$250.00**. Order **#KR-B36-HS**



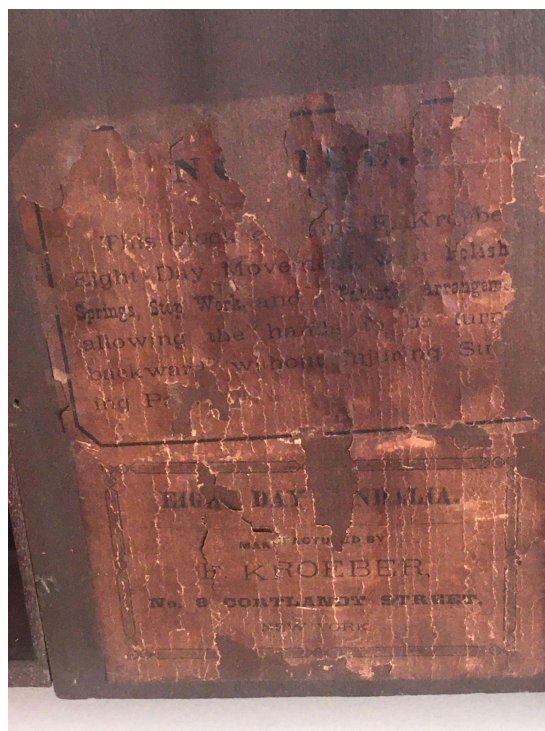
Tuscania

Mantle clock, c. 1898, enameled iron, 8 day gong strike with Eclipse movement. It is 10" high and 10 ¼" wide. This clock is #635, on page 210, in *Kroeber Clocks* by Tran Duy Ly. The American Dial/ Fancy Arabic dial is on page 508. Carl indicated it is fully functional 9/20/20. Box 16. Carl's **consignment** price is **\$350.00**. Order **#KR-B37-HS**



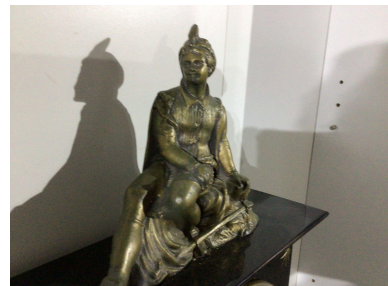
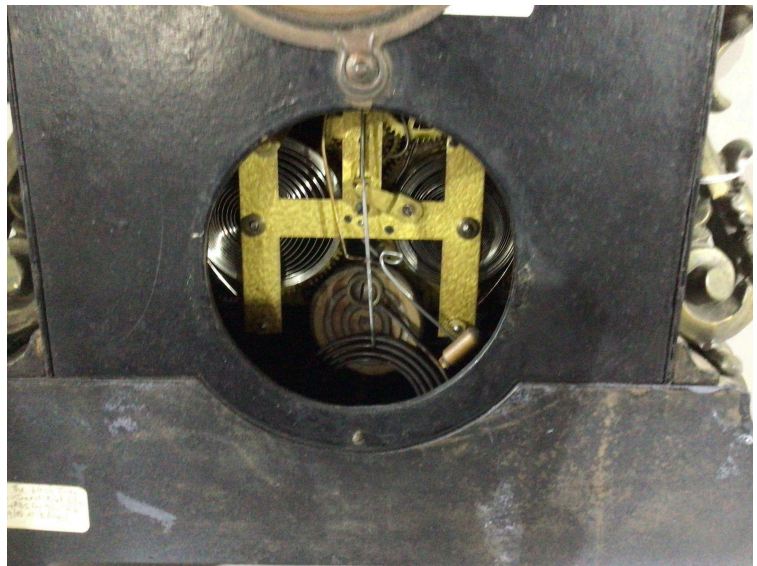
Vandalia

c.1878, Walnut Case with 8-Day Time and Strike, spring driven Movement, Striking on a bell, 18 ½" Tall. Paper Dial 5". This clock is #1189, page 349 in *Kroeber Clocks* by Tran Duy Ly. The pendulum is not as pictured. Fully functioning 9/20/2020. Box 3. Carl's Price for **consignment** **\$350.00**. Order **#KR-B38-HS**



Unidentified Kroeber

This figure is identified in a couple of eBay entries as a Nicholas Muller & Sons clock topper reproduced for consumers to top their clocks in the 1880. This one sits atop a heavy black enameled iron clock. The entire clock is 17" high. 13 $\frac{3}{8}$ " wide and 5 $\frac{3}{8}$ " deep. I searched in the Kroeber books and catalogs, but did not find it. Shelf A2. For **repair or parts**, Carl's price is **\$250.00**. Order **#KR-B39-HR**



Unidentified Kroeber

This unknown Kroeber is 11 $\frac{5}{8}$ " wide, 17 $\frac{1}{2}$ " high. The case is worn and in need of repair. The dial is 4 $\frac{1}{2}$ ". Shelf C1. For **parts or restoration**, Carl's price is **\$150.00**. Order #KR-B40-HR

